

INSTRUCTIONS FOR MAKING GIFT BAGS

**** Will need 2 pieces of 12 x 12 or 6 x 6 double-sided paper ****

Measurements / Type of Bag

12 x 12 paper

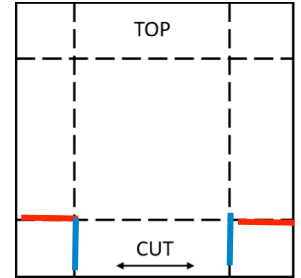
SQUARE - 2 inch score on all sides

RECTANGLE – Top side 2 inches, 3 inch score on remaining 3 sides

6 x 6 paper

SMALL – 1 ½ inch score on all sides

SMALLEST – 1 inch score on all sides



For small cuts

- 1 piece of paper cut where **red** lines are
- 1 piece of paper cut where **blue** lines are

Assembling the bag

- * Score both pieces of paper (see above)
- * Fold top side of paper down.
- * Cut paper where indicated on diagram.
 - One piece of paper is cut on bottom where indicated in **blue**
 - One piece of paper is cut where indicated in **red**
- * Decide which side of the paper will be the front of the bag
- * Use either strong glue or tacky tape to put sides and bottom of the bag together
- * Insert holes in the top of the bag to insert ribbon for handles
- * Can also make long slot in top fold-over piece for card to be inserted (put a small piece of card stock behind where you will cut slot for support).

