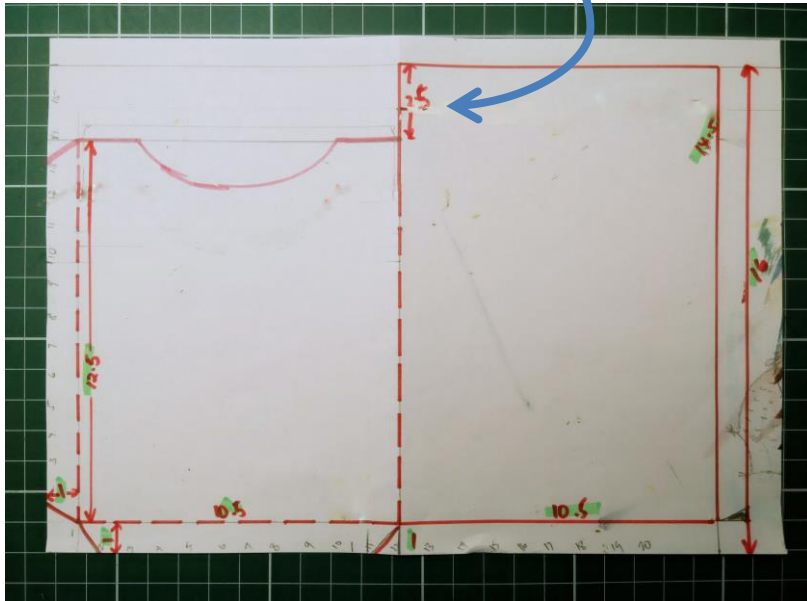


Hey Chick Pocket Card by Evelyn Bicknell

My draft: Measurements are in cm. The back of the card extends 2.5cm above the front (unclear in photo).

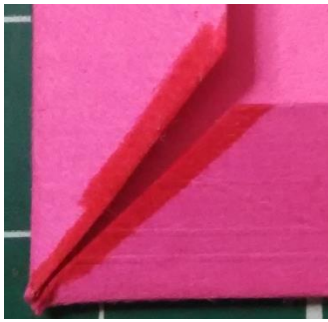


Stamp woodgrain before using dies.



Hey Chick Pocket Card by Evelyn Bicknell

Make sure you mitre corners so they don't overlap to avoid bulkiness.



With the colouring, I used reinkers and the fine tipped aqua painter on shimmery white card stock. Stamp with StazOn. Base colour your image with lightest colour and let dry or use heat tool to dry before applying darker colours. Yellow chic in order of colour: Daffodil Delight, Crushed Curry then apply Chocolate Chip lightly, pulling from edge inwards.

- Start from edges towards where you want your light area to be. This gives depth.
- Once you put your brush to card stock, keep going until ink is lighter. Don't be tempted to lift your brush to make feathery strokes as this will cause streaking especially on the yellow and grey chicks.
- When you want to show depth in small areas eg the tail of my Cajun Craze chick, start with 1 or 2 strong ink brush stroke at the edge, lift your brush and dab most of the ink off before you begin again from the edge to drag the ink towards the opposite edge.
- Apply blue lightly on areas where you have areas of light Cajun Craze.

The main colours are Cajun Craze, Crushed Curry, Dapper Denim, Chocolate Chip and Slate Grey.

Glue the large DSP (Crushed Curry with white dots) onto the back base of the card.

Hope this helps. Email me if you have any questions,

x Evelyn